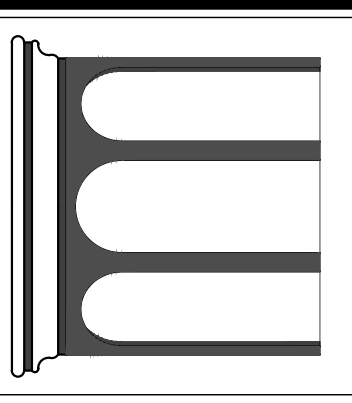


GROUND FLOOR PLAN
SCALE: 1/4" = 1'-0"

**STUDIO
TAGLAND
DESIGNS LLC**

3 WEST DELAWARE, BEACH HAVEN TERRACE, NJ 08008 (609) 361-8128
WWW.STUDIOTAGLANDDESIGNS.COM
NEW JERSEY STATE BOARD OF ARCHITECTS AUTHORIZATION NUMBER: AC-957



DAVID A. GAFFIN
ARCHITECT

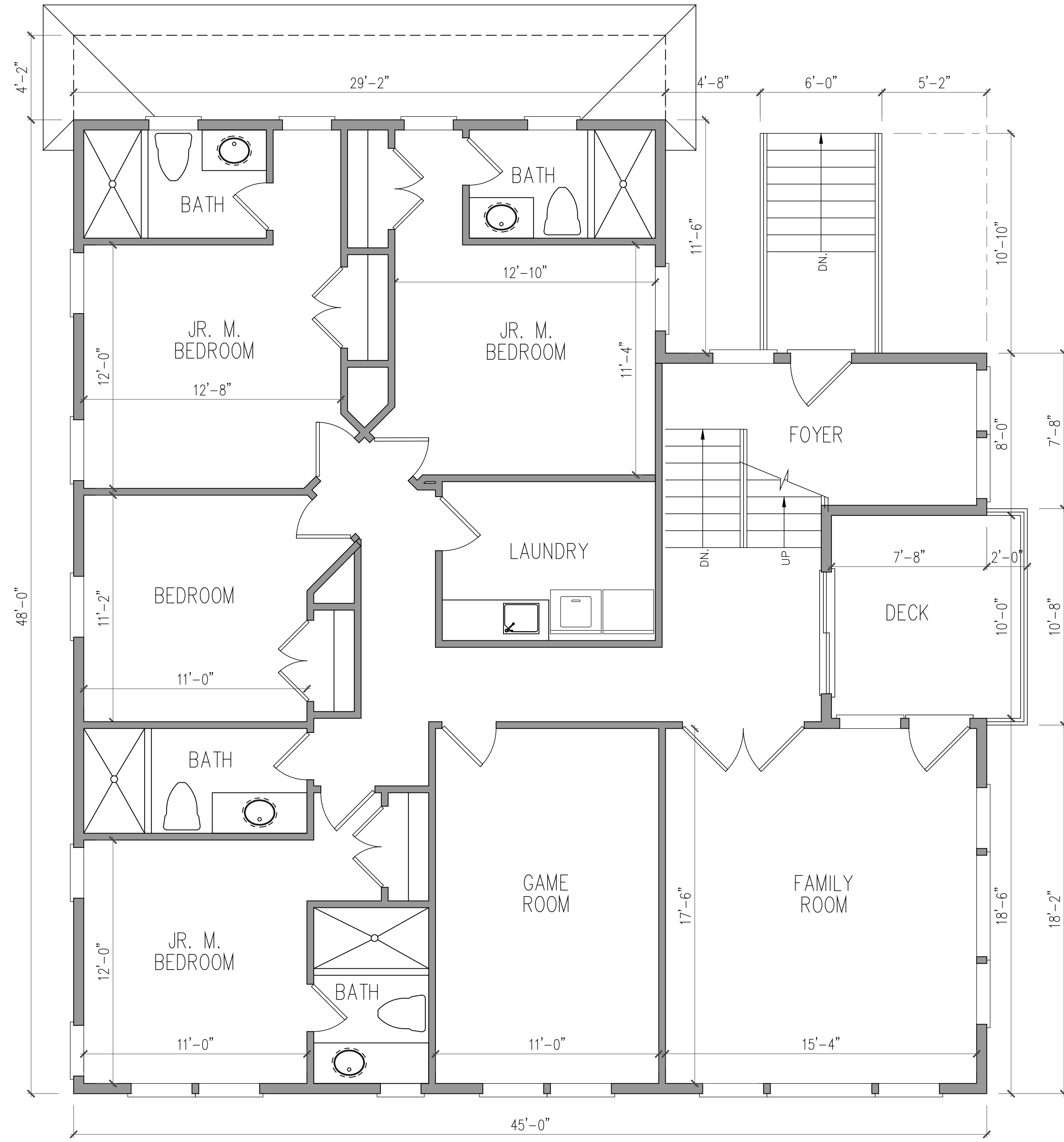
David A. Gaffin

NJ REG. # A115796

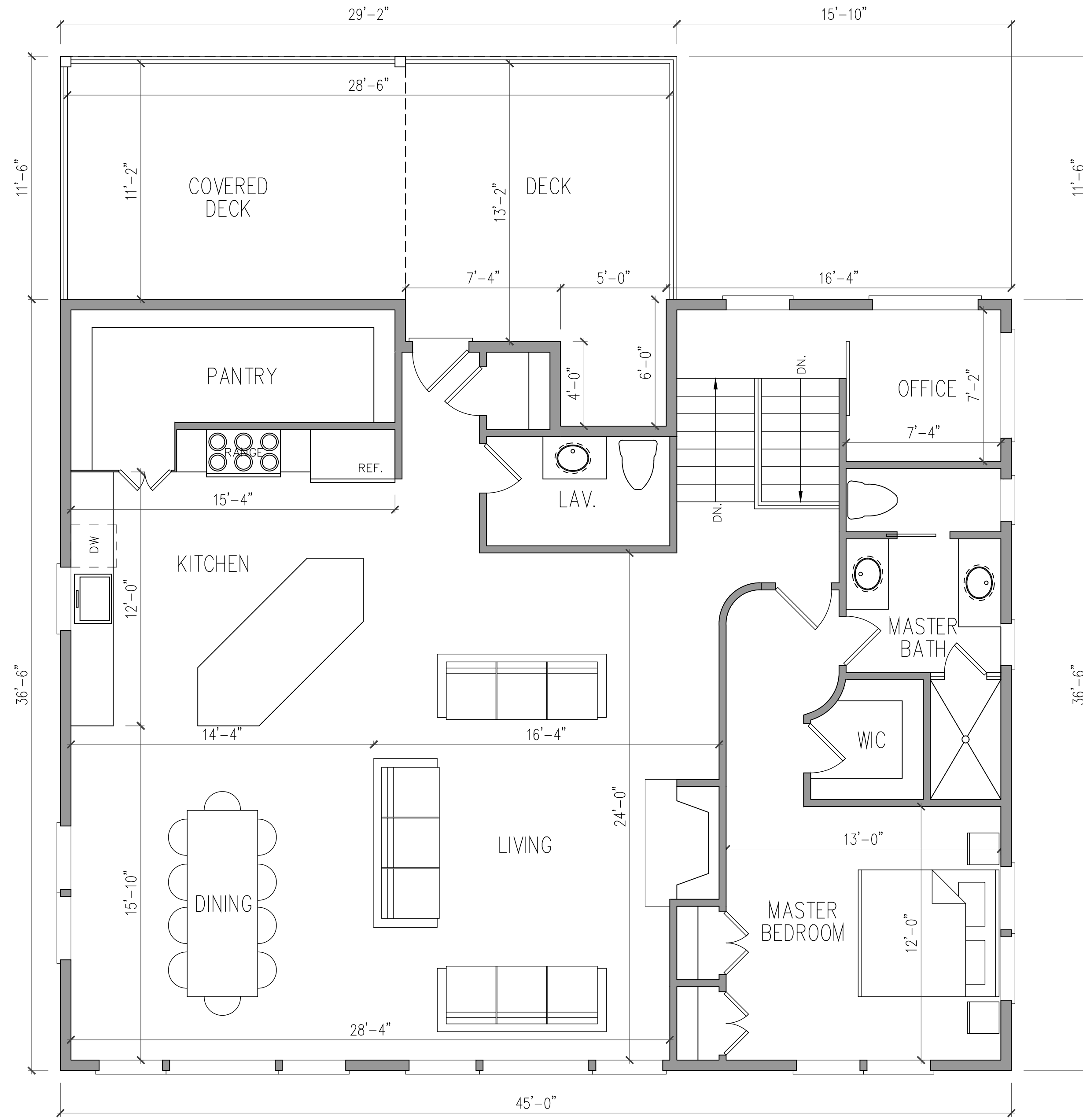
**PROPOSED MIXED-USE BUILDING
LOTS 1 & 17 BLOCK 13.08
LONG BEACH TOWNSHIP
OCEAN COUNTY, NEW JERSEY**
APPLICANT: DOLORES SANTORO

PLAN

SCALE: AS NOTED	APPROVED BY	DRAWN BY: DAG
DATE: 6/6/24	CHECKED BY	CHECKED BY
REVISION:	REVISION:	DRAWING NUMBER: A-1



FIRST FLOOR PLAN
SCALE: 1/4" = 1'-0"

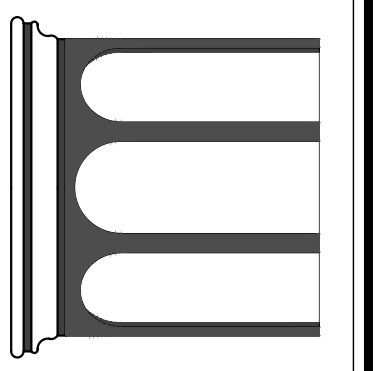


SECOND FLOOR PLAN
SCALE: 1/4" = 1'-0"

PLANS	AS NOTED	APPROVED BY	DRAWN BY
SCALE:	DATE:	REVISION:	CHECKED BY
1/4" = 1'-0"	6/6/24		
			DRAMIC NUMBER
			A-2

PROPOSED MIXED-USE BUILDING
LOTS 1 & 17 BLOCK 13.08
LONG BEACH TOWNSHIP
OCEAN COUNTY, NEW JERSEY
OWNER: DOLORES SANTORO

DAVID A. GAFFEN
ARCHITECT
David A. Gaffen
NJ REG. #115796



STUDIO
TAGLAND
DESIGN LLC
3 WEST DELAWARE, BEACH HAVEN TERRACE, NJ 08008 (609) 361-8128
WWW.STUDIOTAGLANDDESIGNS.COM
NEW JERSEY STATE BOARD OF ARCHITECTS AUTHORIZATION NUMBER: AC957



NORTH ELEVATION
SCALE: 1/4" = 1'-0"



WEST ELEVATION
SCALE: 1/4" = 1'-0"



EAST ELEVATION
SCALE: 1/4" = 1'-0"

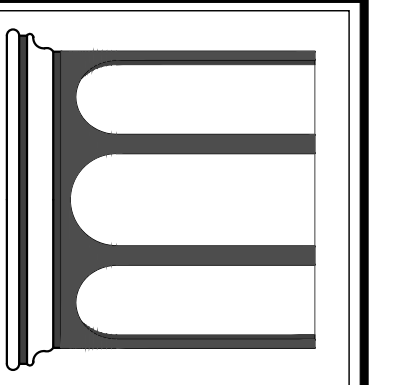


SOUTH ELEVATION
SCALE: 1/4" = 1'-0"

ELEVATIONS

PROPOSED MIXED-USE BUILDING
LOTS 1 & 17 BLOCK 13.08
LONG BEACH TOWNSHIP
OCEAN COUNTY, NEW JERSEY
OWNER: DOLORES SANTORO

DAVID A. GAFFIN
ARCHITECT
NJ REG. AT 15796



STUDIO
TAGLAND
DESIGN LLC
3 WEST DELAWARE, BEACH HAVEN TERRACE, NJ 08008 (609) 361-8128
WWW.STUDIOTAGLANDDESIGNS.COM
NEW JERSEY STATE BOARD OF ARCHITECTS AUTHORIZATION NUMBER: AC-957

SCALE: AS NOTED	APPROVED BY	DRAWN BY: DAG
DATE: 6/6/24	CHECKED BY	
REVISION:		DRAWING NUMBER: A-3